



FIRST EDITION OCTOBER 2019

We worship, welcome, witness, teach and serve in the name of Jesus Christ.

FIRST EVANGELICAL LUTHERAN CHURCH
21 SOUTH BEDFORD STREET, CARLISLE, PA 17013

Almost there!

The fencing around the construction site has been removed, our new nursery is open, final inspections are being scheduled, and we can see the finish line for our project!



At September's Congregation Council meeting, we discussed how delays in the timeline for completing a project can start dissipating enthusiasm. However, my guess is that, once we have a chance to spend time in our wonderful new space, use the elevator, and experience the community "connection point" that the upper level of the atrium is designed to be, enthusiasm will be renewed!

Because there is still work to be done, we are rescheduling **Celebration Sunday** for **Sunday, October 27** (we may still be working on punch list items into November, but that shouldn't stand in the way of our occupancy permit). The 27th is also Reformation Sunday, so it will be a festive, exciting morning!

Thank you, thank you, thank you - for your patience, good humor, continuing financial support, and faithful worship during a time of disruption. We have been doing the hard work of stewardship - taking care of and improving our beautiful building - for the ministry that is to come. Well done, good and faithful servants!

In Christ's love,
Pastor Leber



Benjamin Slusser enjoying our new nursery space which opened last Sunday! The space (formerly our youth lounge and also ground zero for the Good Friday Flood) has gotten a new wall of windows, new carpet and baseboard, and fresh paint. The Faith Formation Committee is also purchasing some new toys and books.



LUTHERAN CAMPING CORPORATION

At Camps Nawakwa and Kirchenwald and the Wittel Farm this fall:

† October 20 — Fall Foliage Day at Kirchenwald and Nawakwa, registration deadline: Oct. 11

† November 3 — Quilt Auction at Nawakwa, registration deadline: Oct. 20

† November 8-10 — Women’s Craft Retreat at Nawakwa, registration deadline: Nov. 1

† December 7 — Advent Day Apart at the Wittel Farm, registration deadline: Nov. 22

For more information or to register for any of these events, check out the camp bulletin board located near room 24 (upper lever of the Christian Ed wing), contact the camping office at (717) 677-8211 or visit www.LutheranCamping.org.

Building to Serve All God’s Children Capital Campaign Update (as of September 22)

Total pledges/gifts from 117* households: \$656,685
(consists of \$604,415 in three-year pledges/one-time gifts and \$52,270 unpledged/“as able” gifts given)

Total pledged and unpledged campaign contributions paid: \$458,476



**Includes nine (9) non-member households, which made one-time memorial gifts to the campaign.*

SALVATION ARMY ANNUAL FABRIC SALE!

Friday, October 11

8 a.m. — 2 p.m.

Saturday, October 12

9 a.m. — 12 noon

Sunday	Attendance	Offering
Aug. 4	108	\$6,613.00
Aug. 11	135	\$3,965.00
Aug. 18	148	\$8,181.00
Aug. 25	132	\$3,288.00

Proceeds benefit the programs of The Salvation Army.

For more information call Hattie Ogle 717-258-3438 or Jan Fritchey 717-258-6883.



FAITH FORMATION

FAITH FORMATION CLASSES

As announced earlier this year, we are offering a series of learning opportunities for adults on Sunday mornings. Some may be “one-off” classes; some may run for a number of weeks. You are welcome to attend whichever classes interest you. We hope that this flexible approach will enable more folks to participate. All Faith Formation classes start promptly at 9:15 a.m. and finish at 10 a.m. A weekly fellowship time follows from 10-10:15 a.m. in the Martin Luther Room on the upper level.

Looking ahead (locations TBA):

- ✝ **October 6 and 13**, *Religion and Political Polarization in the U.S. Today*, led by Dr. Sarah Niebler, Assistant Professor of Political Science, Dickinson College.

American politics is contentious, with many people believing the United States is more politically, socially, and culturally divided than it has been at any time since the Civil War. Religious denominations are also polarized in ways they have not always been. On October 6, we will look at polling data from the PEW Research Center examining the nature of polarization in a variety of religious denominations. We will also think about how other aspects of our identity interact with religion and what impact that has on political polarization. On October 13, we will consider possible solutions to political polarization with a particular focus on how religious institutions might be able to help decrease polarization in the U.S.

- ✝ **October 20 and 27**, *Conflicts Between Church and State*, led by Rich Wood

Conflicts between church and state have existed since the development of Christianity. These sessions will be examining two of the conflicts that sought, pretty unsuccessfully as it turned out, to resolve the major differences. They are:

- * The Investiture Crisis — Who does what for whom, when, and why?
- * The “Outrage at Anagni” — Who has the final say in worldly actions? Popes, kings or emperors?

Also currently available is an adult bible study of First and Second Timothy. This six-week session led by Roger Williams meets in room 24 and will end on October 20. All are welcome to attend.

Spooky Saturday - Saturday, October 19, 12 noon - 3 p.m.

First Lutheran will be participating again this year in the downtown Carlisle trick-or-treat event known as “Spooky Saturday.” In recent years, several hundred children and parents have passed through our doors and received candy and information about our congregation. This is a great opportunity to show hospitality to our neighbors.

We will need volunteers to welcome trick-or-treaters and help give out candy on October 19. If you can help for an hour or two between noon and 3 p.m., please let the church office know. Thank you!





Please give generously on Ingathering Sunday, October 6, to help assure that LWR's work continues throughout the world. LWR envelopes will be available at worship; checks should be made payable to "First Lutheran Church" and designated for "LWR Quilt & Kit Shipping Fund."



Three women from the Lamjung district who survived the spring April 2015 earthquakes in Nepal hold LWR quilts for their families to help them through the cold nights in temporary shelters.

OCTOBER 25 WORKDAY AT THE LWR WAREHOUSE

On Friday, October 25, we will travel to the Lutheran World Relief warehouse in New Windsor, Maryland, to spend the morning preparing LWR kits, blankets, and/or quilts for shipment to those in need.

Our group will depart from First Lutheran's parking lot at approximately 7:15 a.m. and return at approximately 2:30 p.m. Lunch will be in the LWR warehouse cafeteria.

To sign up contact Robin in the church office no later than Wednesday, October 16.
Space is limited to 20 persons.



Lutheran
World
Relief
lwr.org



REACHING OUT TO COMMUNITIES AROUND THE WORLD IN EXTREME POVERTY

*“For the needy shall not be forgotten, nor the
hope of the poor perish forever” - Psalm 9:18*

LUTHERAN WORLD RELIEF has been building bridges from the U.S. to the developing world since 1945, channeling the generosity of those called by faith to share their support. By investing in people and **working in partnership** with local leaders who know their communities, our efforts enable the **rural poor** to adapt to the challenges that threaten their livelihoods and well-being.

For the rural poor, farming is not just a way to put food on the table; it's what pays for shelter, clothes, school fees, and visits to health clinics. Farmers face **unstable harvests** and **unpredictable weather patterns**, resulting in a life of deprivation for

themselves and their children. These challenges are only compounded by **unexpected emergencies**, like earthquakes, tsunamis, or civil war.

LWR works over months and years, moving people from **relief** to **recovery** to **resilience**. With the generous support of people like you, we help people not to just survive, but to thrive, in the face of new realities and new challenges.

**Please give generously to LWR
and create a future where all
people, in every corner of the
world, live full, dignified lives.**

A Legacy of Service to the Community

The Board of Directors of YWCA Carlisle recently awarded First Lutheran member **Karen Galbraith** “The Ruth K. and Nancy J. George Award for Outstanding Volunteer Community Service.” This award, which dates back to 2001, was created and continues through the generosity of the George Family, including Nancy, a member of our congregation until her death in 2016.

It is pretty amazing to see so many First Lutheran women on the list of past recipients! In addition to Karen, this year’s recipient, the award has been presented to congregation members **Nancy George** (2001), **Sarah Hefelfinger** (2002), **Nancy Ingram** (2011), and **Beverly Mancke** (2012).

Congratulations and thanks to these women for sharing their time and talents not only with our congregation but also with the Carlisle community!



Members of First Lutheran Karen Galbraith and Beverly Mancke. Karen and Beverly are mother and daughter and also recipients of the YWCA Carlisle award for community service!

MARK YOUR CALENDARS, PLEASE!

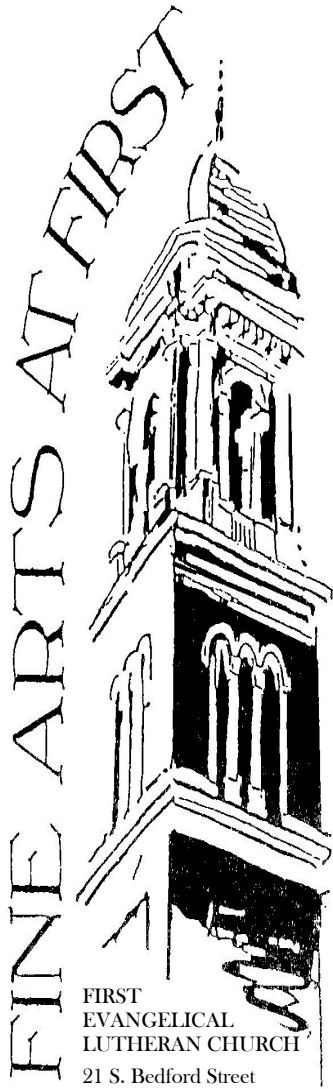
Our 2019 annual congregation meeting will be held on Sunday, November 10. As in years past, we will gather for a potluck lunch following the 10:30 a.m. service, at approximately 11:45 a.m. The business meeting will be held immediately following lunch.

Copies of the 2019 Annual Report (including the 2020 Mission Spending Plan and Capital Projects Budget) and Council nominee bios will be available beginning Sunday, October 27.

GIANT Receipts Collection — October 1-31



Project SHARE will be collecting receipts from GIANT Food Stores in October. Receipts can be for food or gas purchases. Project SHARE will receive \$1 for each receipt collected dated October 1-31 (up to \$5,000). **Collection boxes for GIANT receipts will be available in the High Street narthex and in the church office. Receipts must be turned in no later than Friday, November 1.**



FIRST
EVANGELICAL
LUTHERAN CHURCH
21 S. Bedford Street
Carlisle, PA 17013
717-249-3310
www.firstlutherancarlisle.org

FINE ARTS AT FIRST

presents

JOHN BULLARD

Classical Banjo

John Bullard, classical banjo, will perform on Sunday, October 20, at 3:00 p.m. at First Evangelical Lutheran Church. He is the first graduate of Virginia Commonwealth University's Department of Music to earn a degree in performance with the banjo. Bullard has established a critically praised performing and recording career dedicated to exploring the artistic marriage of banjo and classical music.

Although most people think of the banjo as a folk and bluegrass instrument, he is introducing the classical banjo to a growing audience worldwide through three album-length recordings, live performances, and workshops. His concert repertoire will include performances of Bach, Vivaldi, Handel, and others of the Baroque Period along with later period pieces by Schumann and others. More recently Bullard has begun featuring new works by contemporary American composers. He will be joined for part of the concert on organ and piano by First Lutheran's cantor, David Erickson. The concert is free. A freewill offering will be received, and a dessert reception hosted by the Fine Arts Committee will be held following the performance.

*“Beautiful music
is one of the most
magnificent and
delightful presents
God has given us.”*

— Martin Luther



WELCOME OUR NEW MEMBERS!



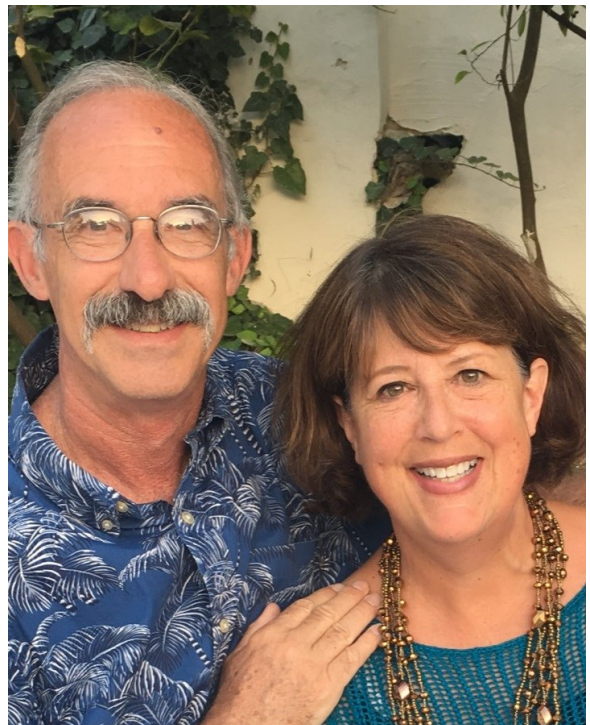
William and Deborah Boehm



Steven and Sarah Miller



*Luke Ranta
and Emily Marshall*



*John Steffee
and Martha Stigelman*

Meetings & Events

October 2019

- Tues., Oct. 1** — 4 p.m. — Fine Arts at First Committee
- Wed., Oct. 2** — 9:30 a.m. — WELCA Bible Study
6:30 p.m. — Worship & Music Committee
- Fri., Oct. 4** — 7 p.m. — Carlisle High School Class of 1964 Alumni Memorial Service
- Sat., Oct. 5** — 3-4 p.m. — Tai Chi — *Festal Hall*
- Sun., Oct. 6** — 4 p.m. — Youth Serve at My Brother's Table Soup Kitchen
7 p.m. — Book Discussion Group at Pastor Leber's home
- Tues., Oct. 8** — 9:30-11 a.m. — LWR Quilting Group
- Wed., Oct. 9** — 7 p.m. — Faith Formation Committee
- Sat., Oct. 12** — 3-4 p.m. — Tai Chi — *Festal Hall*
- Sun., Oct. 13** — 8 & 10:30 a.m. — Celebration Sunday
- Tues., Oct. 15** — 6:30 p.m. — Congregation Council
- Wed., Oct. 16** — 8:30 a.m. — FELC Volunteers at Project SHARE Distribution
- Thurs., Oct. 17** — 9 a.m. — Rummage Sale Setup
- Fri., Oct. 18** — 8 a.m.-3 p.m. — Rummage & Bake Sale
- Sat., Oct. 19** — 7:30 a.m. — Men's Huddle —
at Momma Spriggs
8-11 a.m. — Rummage & Bake Sale
12-3 p.m. — Spooky Saturday
3-4 p.m. — Tai Chi — *Festal Hall*
- Sun., Oct. 20** — 3 p.m. — John Bullard, Classical Banjo —
Fine Arts at First
- Tues., Oct. 22** — 9:30-11 a.m. — LWR Quilting Group
6:30 p.m. — Evangelism Committee
- Fri., Oct. 25** — 7 a.m.-2:30 p.m. — LWR Warehouse Work Day
- Sat., Oct. 26** — 1 p.m. — Stigelman/Steffee Wedding
- Sun., Oct. 27** — 11:45 a.m.-2 p.m. — Confirmation Class

**Staff meetings are held every
Tuesday at 1:30 p.m.**

**During *Building to Serve All
God's Children*, meetings,
including council, committees,
WELCA, money counters, etc.,
are being held in room 18 (across
from Pastor's office).**



- ♫ **Handbell Choir – Thursdays, 6 – 6:45 p.m.**
♫ **Chancel Choir – Thursdays, 7 – 8:30 p.m.**

THANKOFFERING SUNDAY

Sunday, October 6

Thankoffering Sunday is a time when we honor the women of the church and woman everywhere. On this Sunday, women will be serving during worship in various leadership roles such as assisting minister, communion assistants, acolyte, ushers, and lector, to name a few.

Thankofferings received on October 6 will help women who are in abusive situations, homeless, needing counseling or in need of help with education. Special envelopes will be available from the ushers if you wish to give to this ministry for women and children in need. Checks should be made payable to WELCA and marked for Thankoffering.

We and women everywhere thank you!

Don and I want to thank Pastor Leber for her visits and bringing us communion when we were homebound. It was greatly appreciated.

Donald and Patricia Fry



FALL RUMMAGE & BAKE SALE

Friday, October 18 — 8 a.m.-2 p.m.

Saturday, October 19 — 8-11 a.m.

It is time for our fall sale, and we are need of help and baked goodies. Setup will take place on Thursday, October 17, from 9 a.m. until about 2 p.m. with the sale taking place on Friday and Saturday. Lunch will be served on Thursday and Friday for those helping. On Saturday at 11 a.m. we will start to pack up the remaining items for Green Drop. Men are encouraged to help on any of the days, but especially on Saturday at 11 a.m. to help cleanup, put away tables and racks and help pack. Any help, no matter how long, will be greatly appreciated. Proceeds from the sale are given to local benevolences.

Donations of baked goods are needed for our bake sale. No cakes or bought items, please. Good choices are small loaves of bread, pies, cookies, candies, fudge, whoopee pies, Chex Mix, etc. Please mark your pans with your names. All baked goods should be brought to the Festal Hall kitchen on Thursday or early Friday morning.

Donations for the rummage sale may be brought to Festal Hall any day. No large furniture will be accepted until after October 9. Items should be in clean, usable condition, and electrical items should be checked at home for working condition. Please, we prefer only fall and winter items. No baby strollers, cribs, swings, car seats, ski equipment, electronics or exercise equipment will be accepted. Brown grocery bags are always welcome!

RECYCLE YOUR ALUMINUM CANS FOR THE UNION FIRE CO.!

Bring your aluminum cans to church and help the Union Fire Company in the process! All cans should be rinsed out. Please remove the pull tab from the tops of the cans as we are collecting these separately for the Ronald McDonald House in Hershey. The cans and the pull tabs should be placed in the designated containers located in Festal Hall. Thanks for your support!



The following e-mail was received by Patty Gillingham, our Sister Parish liaison, from Pastor Belinda Fernandez of our Sister Parish, Divine Redeemer, in El Salvador.

On 8/29/2019 Pastor Fernandez wrote:

Dear Patty,



The blessings of our Redeemer and Savior be with you always. It is an immense joy and joy my gratitude to God for having called me to serve and thus be able to share the Good News of hope and joy to broken hearts, to accompany our people through a prophetic Pastoral and in our vision of Life Theology, acting as an Integral Pastoral, in the service to the most needy.

And as the Psalmist says, The Lord will complete in me the work that has begun, Psalm 138: "Jehovah will fulfill his purpose in me; Your mercy, Oh Jehovah, is forever; Do not forsake the work of your hands. "

Now fulfilling the essential studies and requirements for my Ordination as a Presbyterian, it is a joy shared with you our dear brothers and sisters, united in brotherhood - The Divine Redeemer, San Miguel and First Lutheran Church, USA. It was very pleasant, and double the joy, to be able to be on that important day in my life, together with Reverend Donald Seiple and the lady who accompanied him [Caroline Sheaffer], who represent all of you.

I am infinitely grateful for the gifts that the children of the Sunday School made with such love, the beautiful card with their greetings of congratulations and good wishes, congratulations with the love printed on the large paper; also thank you for the gift on the check sent with Pastor Donald.

As a pastoral family, we will celebrate our joy also with our family in the faith, in The Divine Redeemer, we had a lunch with special food in the Church, just Sunday, August 18, I share some photos with you, also some photos of the Ordination 5 August 2019.

I thank each of you, for your brotherly love to our community of faith and my person, please extend the thanks to Pastor Lisa Leber and each of our sisters and brothers who with humility and fraternal love make possible the fraternal union between both churches: Divine Redeemer - First Lutheran Church. I ask God to help us and strengthen us in our mission, to be a Church serving the Lord, Samaritan and cordial, to the care of his creation.



Thanks also to each and every person who celebrates this joy with me and may God allow us to grow in brotherly love, as sister parishes. Ask God for me and for all the servants in the Ministry, so that God our Lord will always have us by his hand and continue to pour the grace of his spirit into each one of us.

With brotherly love,

Pastor, Belinda Fernández,
The Divine Redeemer Church
San Miguel, El Salvador.

Pastor Don Seiple and Caroline Sheaffer present Pastor Fernández with well-wishes and a monetary gift from First.


Hiking on the Appalachian Trail

Sunday, November 17

11:45 a.m.

Youth grades 3-12 and their families are invited to join us as we hike a portion of the Appalachian Trail on Sunday, November 17. We will gather following the 10:30 a.m. worship service (approx. 11:45) for lunch. After lunch we will bag trail mix for our afternoon snack before heading out to the trail.

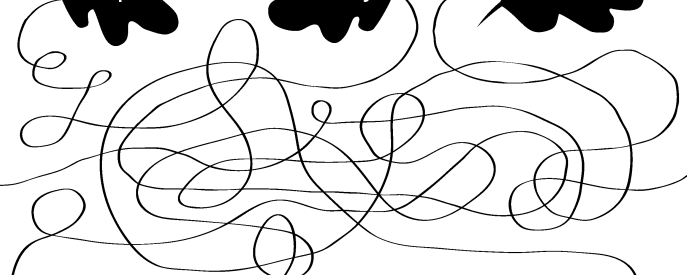
Please make sure to bring a change of clothes and your hiking shoes with you! Please call Robin in the church office if you and your family are able to join us!



Harvest hunt

Directions: After unscrambling each leaf's word, follow the vine to complete the Bible verse.

caepe reway delfis



Galatians 6:9 James 3:18 John 4:35

Peacemakers who sow in _____ reap a harvest of righteousness. James 3:18, NIV

Let us not become _____ in doing good, for at the proper time we will reap a harvest if we do not give up. Galatians 6:9, NIV

I tell you, open your eyes and look at the _____!
They are ripe for harvest. John 4:35, NIV

Answer: peace, weary, fields

HARVEST

Trail Mix

This portable snack combines favorite fall flavors.



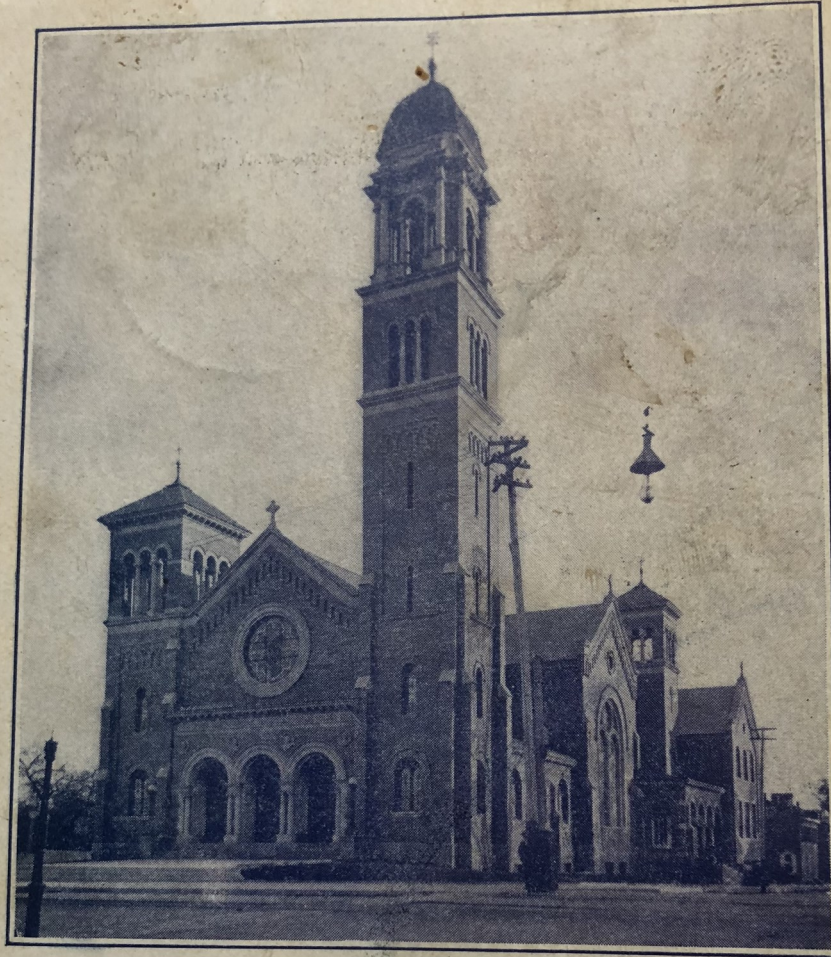
What you need:

- 1/4 cup maple syrup
- 1 tsp. pumpkin pie spice
- 1/8 tsp. salt
- 2/3 cup pecan pieces
- 1/3 cup roasted pumpkin seeds
- 1/3 cup almonds
- 1/4 cup raisins
- 2/3 cup dried fruit (any)

What you do:

1. Microwave syrup, spices, seeds and nuts for 30 seconds at a time, stirring frequently, until mixture thickens.
2. Spread the mixture on a baking sheet lined with wax paper. Let cool and harden.
3. Break the candied nuts into chunks. Combine with dried fruit.
4. Store in airtight container.

From Our Archives



First Lutheran Church, Carlisle, Pa.

*With best wishes to
you + hope your flower
plant is growing.
T. A. Norman.*

POST CARD... This penny post card (Yes, it cost a penny to send!) was a common form of communication in the late 19th and earlier 20th centuries. This one bears two August 1906 postmarks for Carlisle and Woodstock, Va. The modern reader will have to decide for themselves whether or not the flower plant grew.

October Worship Assistants

	October 6	October 13	October 20	October 27
8 a.m. service				
Assisting Ministers	Sandy Kohler	Chuck Martin	Jacqueline Cook	Terri Myers
Bread Bakers	Sarah Niebler	Robin Orner	Kathy Brunie	Joan Gitt
Communion Setup/Cleanup	Monica Frederick	Lisa Newton	Terri Myers	Monica Frederick
Greeter/Usher	Roger Williams	Mike Luther	Sandy Kohler	Gary Newton
Lectors	Terri Myers	Sandy Jumper	Rich Wood	Joan Inners
10:30 a.m. service				
Acolytes	Ainslee Martin	Colton Gillingham	Luke Erickson	Madison Engle
Assisting Ministers	Caryn Carr	Sarah Niebler	Roger Williams	Sean Nedimyer
Bread Bakers	Sarah Niebler	Robin Orner	Kathy Brunie	Joan Gitt
Communion Assistants	Janelle Hoch Robin Orner	Karen Hollen Sam Orner	Sandy Jumper Taylor Miller	Sandy Kohler Don Osborne
Communion Setup/Cleanup	Yvonne Karper Ann Roeder	Taylor & Hope Miller	Cindy Allgyer Ruth Osborne	Kathy Brunie Debbie Reitzel
Flower Distribution	Babette Hoch	Terri Myers	Nancy Baish	Cindy Allgyer
Greeters	Elaine Alvarez Ginny Brennan	Cindy Allgyer Kathy Brunie	Monica Frederick Norma Greider	David & Elaine Haag
Lectors	Donna Chestnut	Sean Nedimyer	David Raphael	Taylor Miller
Nursery Duty	Kathy Hall Taylor Miller	Jeri Fitzsimons Cindy Markle	Nancy Ingram Alecia Staley	Sarah Niebler Hope Miller
Head Usher	Steven King			
Ushers	Don Osborne (head) Cindy Allgyer Kathy Brunie Alecia Staley EmmaRose Harty (youth)	Bob Baker Michelle Fisher Steve Hogg	Jered Hock Jessica King Pria King (youth)	Bill Gillingham Gerald Gillingham Colton Gillingham (youth)



Koikoi, Gibson	10/1
Henderson, Ryan	10/2
McDermond Jr., Joseph	10/3
Yocum, Amelia	10/3
Kreiser, James	10/4
Myers, Terri	10/4
Hoch, Dustin	10/5
Franklin, Anne	10/7
Roeder, Ann	10/8
Van Orden, Elizabeth	10/8
Carvalho, Garry	10/9
Keck Jr., Lester	10/10
Massa, Joy	10/10
Inners, Joan	10/12
Lewis, Joan	10/15
Hollen, Karen	10/16
Swartz, Nancy	10/17
Ramond, Courtney	10/20
Peffer, Nathan	10/21
King, Jessica	10/24
Staley, Madelynne	10/26
Kauffman, John	10/28
Tichnell, Jill	10/28
Brandt, Carol	10/29
Mulholland, Hunter	10/29
Green, Thomas	10/30
Baker, Louise	10/31
Berry, Dorene	10/31

Baker Jr., Robert	10/2	Henderson, Nina	10/13
Newton, Gary	10/2	Martin, Ainslee	10/14
Stone, Lyla	10/2	Newton, Lisa	10/14
Carvalho, Monica	10/4	Nickey, Robert	10/14
Kreiser, James	10/4	Taylor, Crystal	10/14
Shank, Susan	10/5	Callahan III, James	10/19
Allgyer, Cynthia	10/6	Ewing, Jane	10/19
Nickey, Annette	10/7	Jumper, Steven	10/22
Gillingham, Colton	10/11	Eshenour, Bryan	10/29
Quigley, Lois	10/11	Ewing, Colton	10/31

MEMBERSHIP NEWS

NEW MEMBERS September 15, 2019

BY AFFIRMATION OF FAITH
Luke Ranta and Emily Marshall
John Steffee and Martha Stigelman

BY TRANSFER
William and Deborah Boehm
Steven and Sarah Miller

Welcome!

WEDDING

Adam Grant Shaffer
Kristin Diane Nealy
 September 28, 2019

Congratulations!



John & Judith Kauffman (56 years)	10/5
John & Juliet Ward (60 years)	10/31

First Edition OCTOBER 2019

21 South Bedford Street
Carlisle, PA 17013
717-249-3310

Non-Profit Org.
U.S. Postage
PAID
Permit No. 258
Carlisle, PA 17013

The Reverend Lisa M. Leber — pastor@firstlutherancarlisle.org - (717) 462-6138
The Reverend Richard Lorenz — (717) 249-3310
David Erickson — dve@pa.net - (717) 263-4267
Hope Miller — busadmin@firstlutherancarlisle.org - (717) 701-8318
Robin Orner — secretary@firstlutherancarlisle.org - (717) 249-3310
John Shugart, Jr. — (717) 249-3310
Tali Martin — president@firstlutherancarlisle.org

RETURN SERVICE REQUESTED

Church Office Hours:

Monday — Friday

8:30 a.m. — 4:30 p.m.

Closed for lunch — 12:15-12:45 p.m.

label

Sunday Worship:

8 & 10:30 a.m. – Holy Communion

9:15 a.m. – Sunday Church School



Evangelical Lutheran
Church in America

God's work. Our hands.

Check out our website!

www.firstlutherancarlisle.org



Pastor Leber's sermons are posted on our website — so if you miss a Sunday or would like to share a sermon with a friend, visit www.firstlutherancarlisle.org and click on the "Worship" tab and then "Sermons."

Newsletter articles are due by the 15th of each month.